



KINTEK SOLUTION

Crogiolo Di Grafite Ad Alta Purezza Catalogo

Contattaci per ulteriori cataloghi di **Preparazione del campione,**
Apparecchiature termiche, Materiali e materiali di laboratorio,
Apparecchiature bio-chimiche, etc...

KINTEK SOLUTION

PROFILO AZIENDALE

>>> Chi siamo

Kintek Solution Ltd is one technology orientated organization, team members are devoted to probing the most efficient and reliable technology and innovations in the scientific researching equipment, fields like biochemical reacting, new materials researching, heat treatment, vacuum creating, refrigerating, as well as pharmaceutical and petroleum extracting equipment.

In the past 20 years, we earned rich experiences in this researching equipment field, we are capable to supply both the equipment and solution according to customer's needs and realities, we have also developed lots of customer tailored equipment according to a specific working purpose, and we have lots of successful projects in many universities and institutes from different countries, like Asia, Europe, North and South America, Australia and New Zealand, Middle East, and Africa.

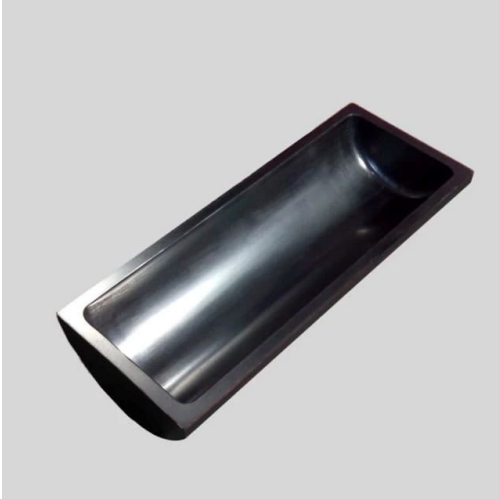
Professionalism, quick response, hard working, and sincerity is a remarkable label of our team members working attitude, which earn us a sound reputation among our clients.

We are here and ready to service our clients from different countries and regions, and share the most efficient and reliable technology together!



Barca In Grafite Di Carbonio - Forno Tubolare Da Laboratorio Con Copertura

Numero articolo: KM-D10



Introduction

I forni tubolari da laboratorio Covered Carbon Graphite Boat sono recipienti o recipienti specializzati in materiale grafitico progettati per resistere a temperature estremamente elevate e ad ambienti chimicamente aggressivi.

[Ulteriori informazioni](#)

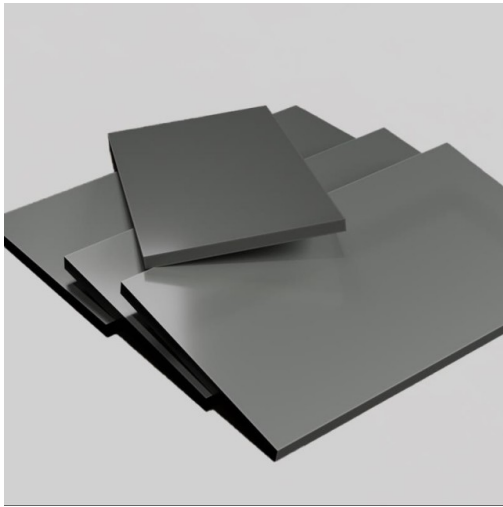
diameter / height / length / thickness

35*18*100*3.5mm

45*150*23*5mm

Piastra In Grafite Di Carbonio - Isostatica

Numero articolo: KM-D11



Introduction

[Ulteriori informazioni](#)

spessore / larghezza / lunghezza

1-50*100*100 mm



Kintek Solution

Sede centrale: No.89 Science Avenue, High-Tech Zone,
Zhengzhou, Cina

Ufficio di Hongkong: 300 Lockhart Road, Wan Chai,
Hongkong

Ufficio in Canada: Boulevard Graham, Mont-Royal, QC,
H3P 2C7, Canada

